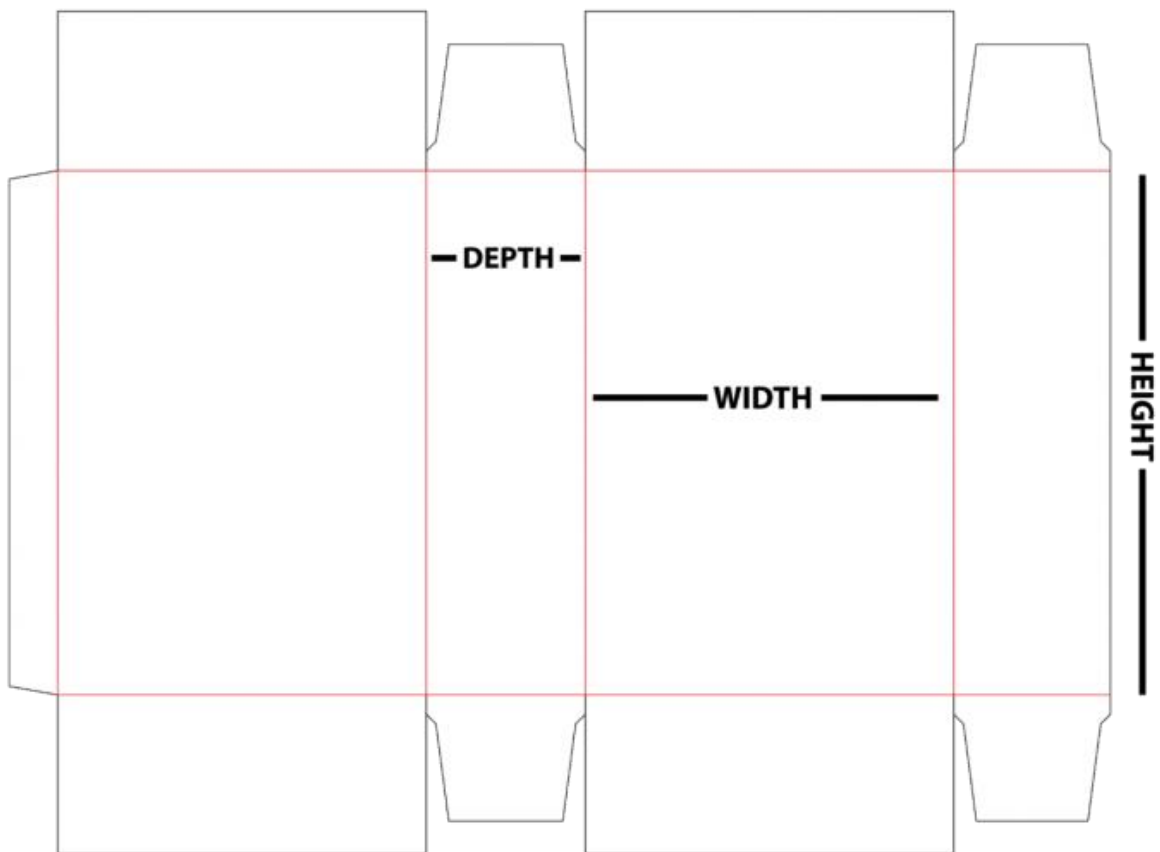




Sealed End Folding Carton



Check for errors: Double-check the dieline for errors such as incorrect measurements, missing or incomplete information, or overlapping lines.

Use proper labeling: Clearly label the dieline with information such as the product name, dimensions, and any other important details.

Consider the printing process: Consider the printing process that will be used, such as offset or digital printing, as this may impact the design and construction of the dieline.

Test the dieline: Before finalizing the design, it's important to test the dieline by creating a sample packaging to ensure that it fits the product and functions as intended.